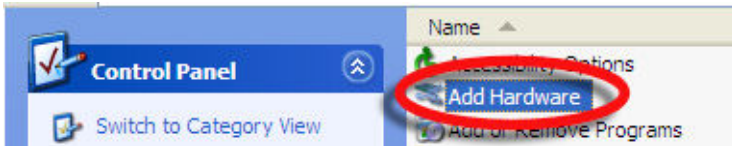


# Keep TCP/IP alive - install a Microsoft TCP/IP Loopback Adaptor

© RedTitan Technology 2006

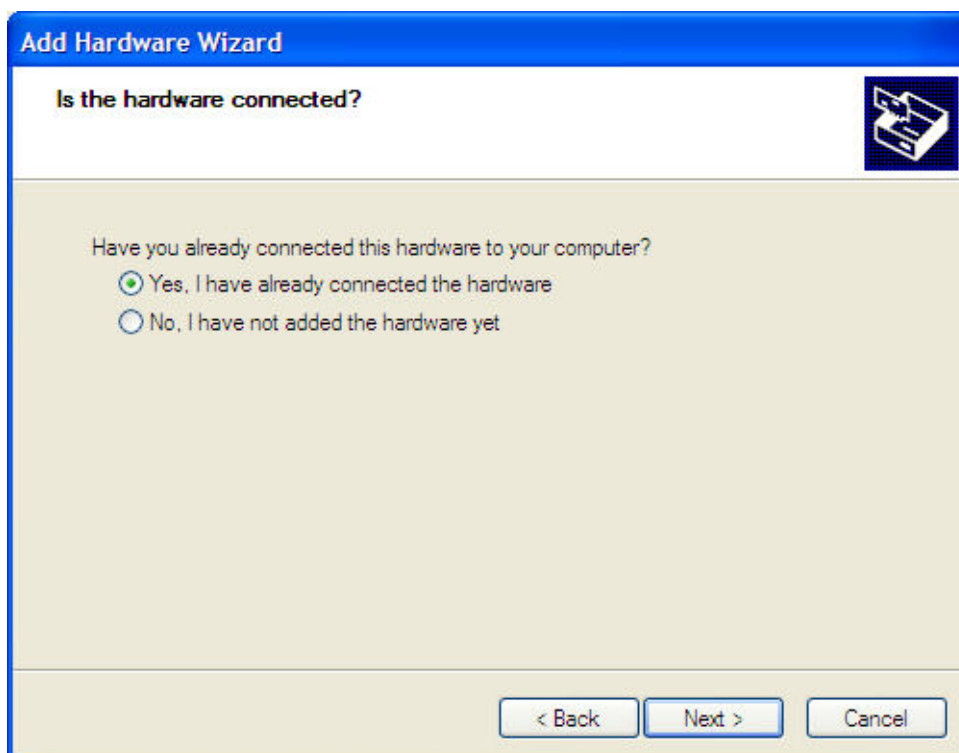
The RedTitan nQ system provides various TCP/IP services for printing files and processing data. Programs can be controlled by connecting to the nQ HTTP server using a web browser. The spooling system "NQLPD", provides rule based file processing and a TCP/IP services including LPR/LPD and TELNET. NQLPD will not start unless a TCP/IP stack is installed.

For demonstrations or isolated computers it is convenient to keep the TCP/IP stack and an IP address even if the network cable is disconnected. You can avoid the complete removal of TCP/IP by adding a loopback adaptor to the TCP/IP configuration. As follows..



1. Choose "Add Hardware" from the Control Panel and click "Next"

Note: No extra hardware is really involved!

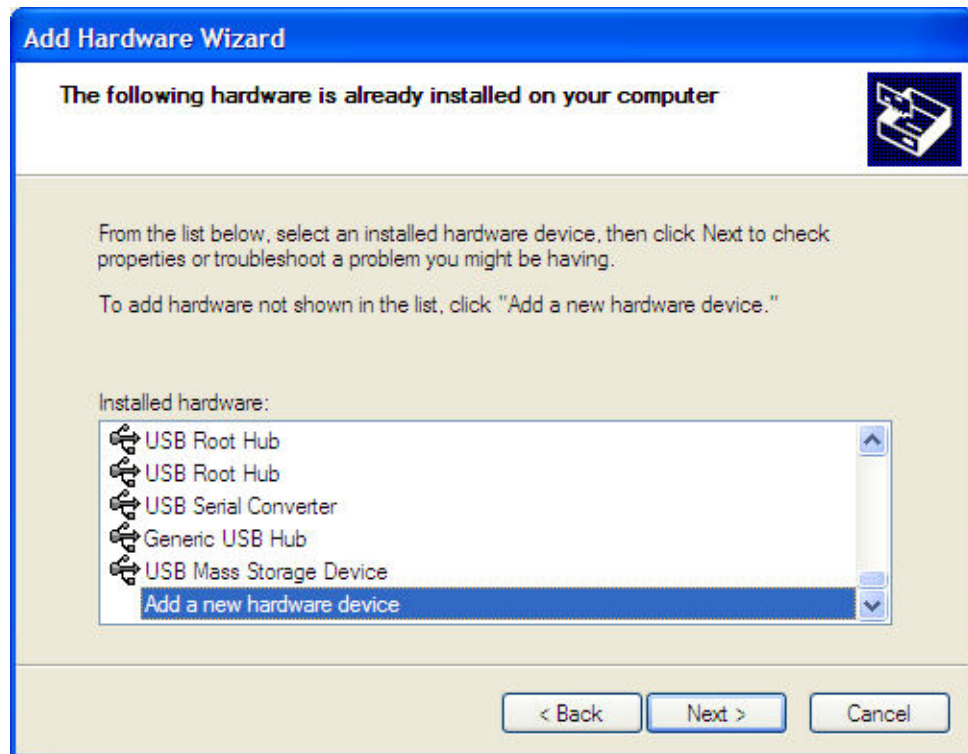


2. Click "Yes, I have already connected the hardware".

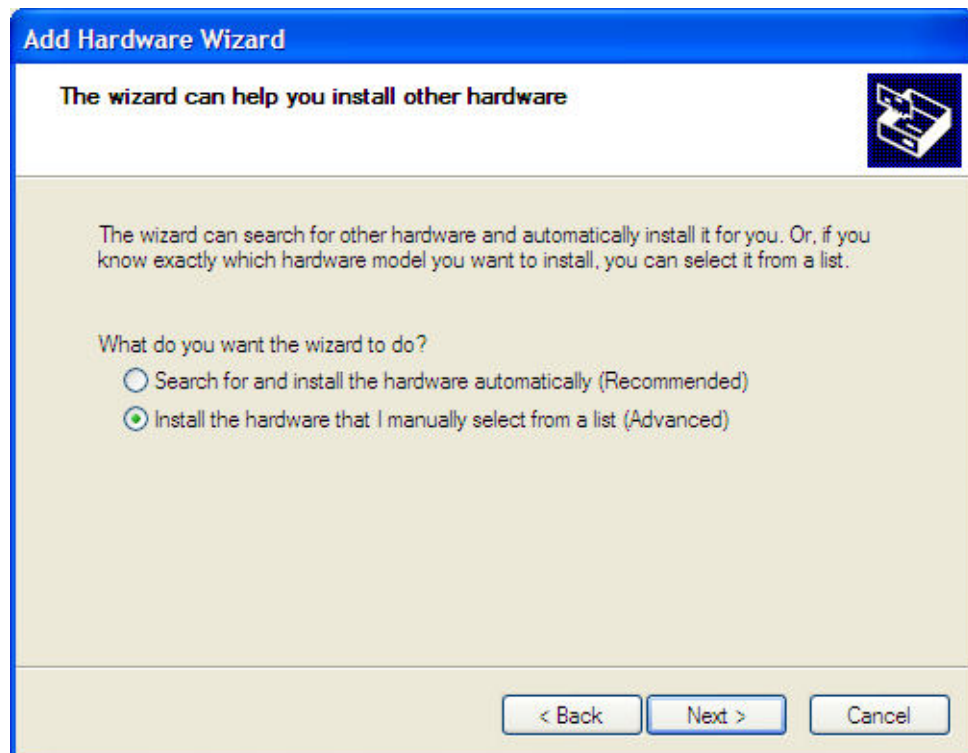
Click "Next"

## Keep TCP/IP alive - install a Microsoft TCP/IP Loopback Adaptor

3. Choose "Add New Hardware Device" and click "Next"

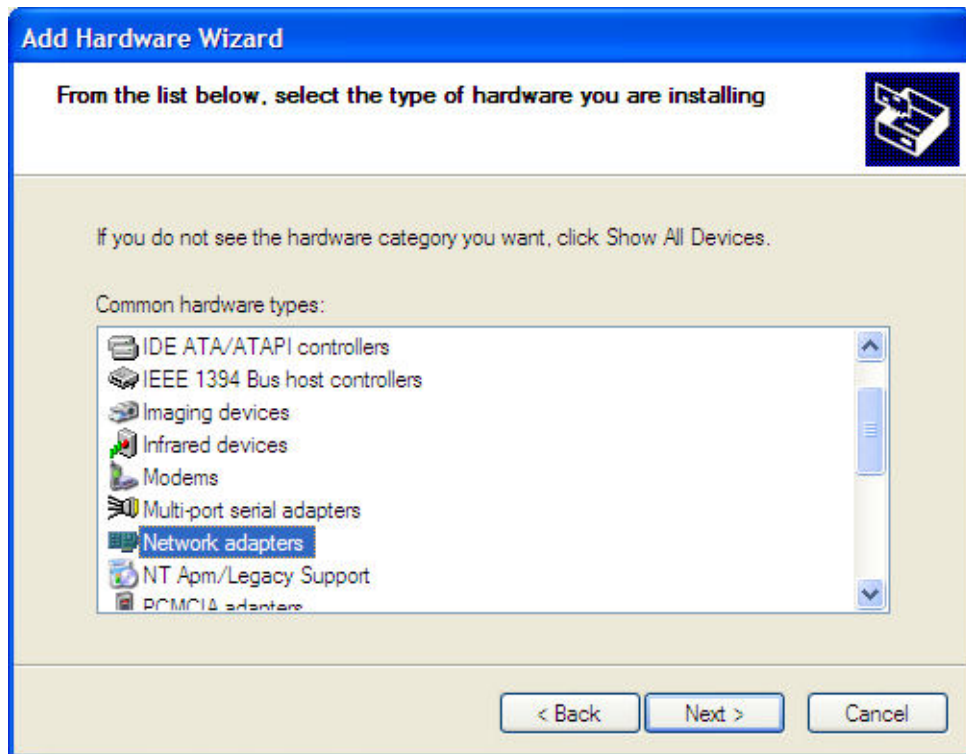


4. Choose "Install the hardware that I manually select from a list ..." and click "Next"

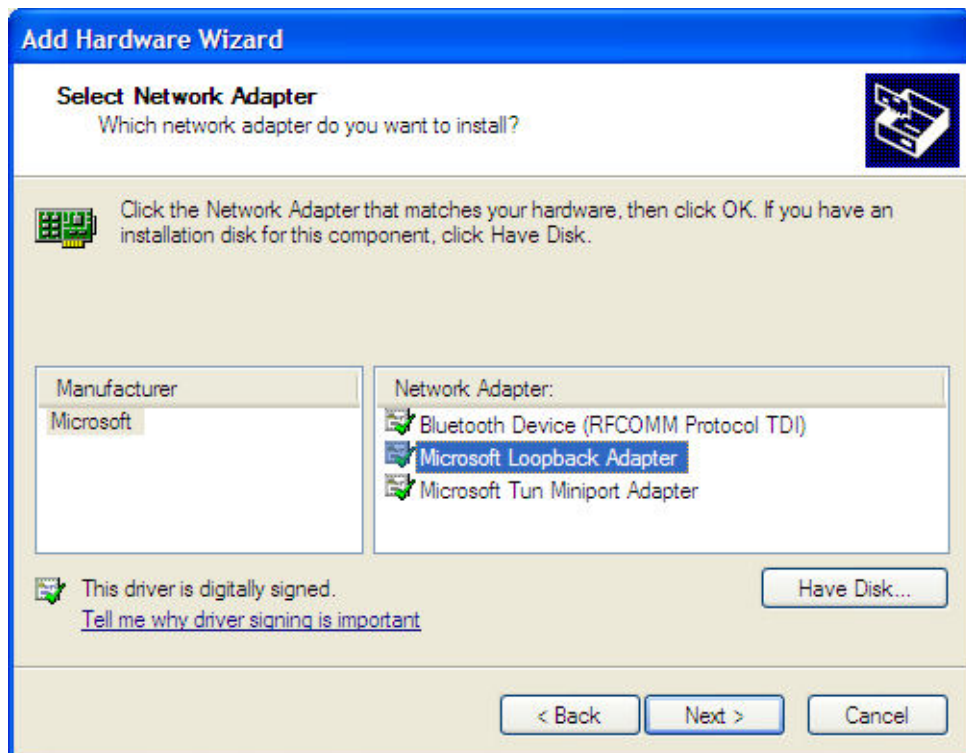


Keep TCP/IP alive - install a Microsoft TCP/IP Loopback Adaptor

5. Choose "Network adaptors" from the "Common hardware types" list.



6. Select the manufacturer "Microsoft" and Network Adaptor "Microsoft Loopback Adaptor". Click "Next" to complete the install.



## Keep TCP/IP alive - install a Microsoft TCP/IP Loopback Adaptor

The loopback adaptor will automatically acquire an IP address. This is sufficient for nQ TCP/IP services even if no ethernet or wireless network adaptors are physically attached. If network adaptors were dynamically removed you must re-boot the system so that the nQ HTTP server can register the new IP address; otherwise HTML page components may refer to a removed IP address.

Use IPCONFIG to check established connections. The loopback connection has no gateway.

```
C:\Documents and Settings\Administrator>ipconfig
```

```
Windows IP Configuration
```

```
Ethernet adapter Local Area Connection 5:
```

```
    Connection-specific DNS Suffix  . :  
    Autoconfiguration IP Address. . . : 169.254.25.129  
    Subnet Mask . . . . . : 255.255.0.0  
    Default Gateway . . . . . :
```

```
Ethernet adapter Bluetooth Network:
```

```
    Media State . . . . . : Media disconnected
```

```
Ethernet adapter Local Area Connection:
```

```
    Media State . . . . . : Media disconnected
```