

RedTitan Print2PC Parallel Port Converter

Quick Installation Guide - US English

© RedTitan Technology Limited 2006, 2007, 2008, 2009, 2016

Revision 4 - March 2016

Product contents

- Certificate of conformance. FCC and EN45014 (overleaf)
- PRINT2PC UP1 parallel to USB converter.
- CD-ROM for installation software and documentation

Introduction

PRINT2PC UP1 is a microprocessor based parallel port converter. It is used in installations where data that is normally sent to a printer must be collected for reprocessing. Verify that the printer is attached by a parallel (sometimes called Centronics) port. PRINT2PC UP1 is **NOT** suitable for printers using a serial attachment.

Consult the computer manufacturer documentation for advice on any precautions that must be taken before attaching this device in place of the printer. UP1 is powered by the PC USB.

Note: Do not attach the USB cable to the Print2PC port until you have completed the software installation.

PC System Requirements

- PC-compatible computer, CPU speed of 200MHz or above
- Memory: 64MB or above, 128MB recommended.
- One available USB port. Shielded USB A to B cable.
- Fully wired and shielded IEEE 1284 A-A cable.
- Windows TM XP, TCP/IP services. Personal web server should not be installed



DECLARATION OF CONFORMITY

Including information to the user.

Product identification: UP1 Protocol Converter

The United States Federal Communications Commission (in 47 CFR 15.105) has specified that the following notice be brought to the attention of users of this product.

This equipment has been tested and found to comply with the limits for a Class B digital device, pursuant to part 15 of the FCC Rules. Operation is subject to the following two conditions:

- (1) this device may not cause harmful interference, and
- (2) this device must accept any interference received, including interference that may cause undesired operation.

Class B limits are designed to provide reasonable protection against harmful interference in a residential installation. This equipment generates, uses, and can radiate radio frequency energy, and, if not installed and used in accordance with the instructions, may cause harmful interference to radio communications. However, there is not a guarantee that interference will not occur in a particular installation. If this equipment does cause harmful interference to radio or television reception, which can be determined by turning the equipment off and on, the user is encouraged to try to correct the interference by one or more of the following measures:

- Reorient the receiving antenna.
- Increase the separation between the equipment and the receiver.
- Connect the equipment into an outlet on a different circuit from the receiver.
- Consult the dealer or an experienced radio/TV technician for help.

CAUTION: Pursuant to Part 15.21 of the FCC Rules, any changes or modifications to this equipment not expressly approved by RedTitan, may cause harmful interference and void the FCC authorization to operate this equipment.

Responsible Party

Name: RedTitan llc.

Address: 3761, Shallow Court; Marietta; Georgia 30066

Telephone number: 770-924-1226

Date: 14th August 2006



REDTITAN

DECLARATION OF CONFORMITY

This Declaration of Conformity is suitable to the European Standard EN 45014, "General criteria for supplier's declaration of conformity." The basis for the criteria has been found in international documentation, particularly in: ISO/IEC Guide 22, 1996, "Information on manufacturer's declaration of conformity with standards or other technical specifications."

RedTitan's liability under this declaration is limited to that set forth in the current RedTitan Terms and Conditions of Sale.

Applied Council Directive(s): 2014/30/EEC Electromagnetic Compatibility Directive (EMC)

We, The Manufacturer:

RedTitan Limited
Aston Court; Kingsmead Business Park
Frederick Place, HIGH WYCOMBE
HP11 1JU
UK

declare under our sole responsibility that the following equipment:

UP1 Protocol Converter

to which this declaration relates is in conformity with the relevant provisions of the following standard(s) or other normative document(s) when installed in conformance with the installation instructions contained in the product documentation:

Emissions: EN55022:1998 (Amds. A1:2000, A2:2003) Class B Information technology equipment.
Radio disturbance characteristics - Limits and methods of measurement

Immunity: EN55024:1998 (Amds. A1: 2001, A2:2003) Information technology equipment.
Immunity characteristics - Limits and methods of measurement

Technical Information is maintained at:

RedTitan Limited
Aston Court; Kingsmead Business Park
Frederick Place,
HIGH WYCOMBE
HP11 1JU
UK

We, the undersigned, hereby declare that the product(s) specified above conforms to the listed directive(s) and standard(s).

Signature:

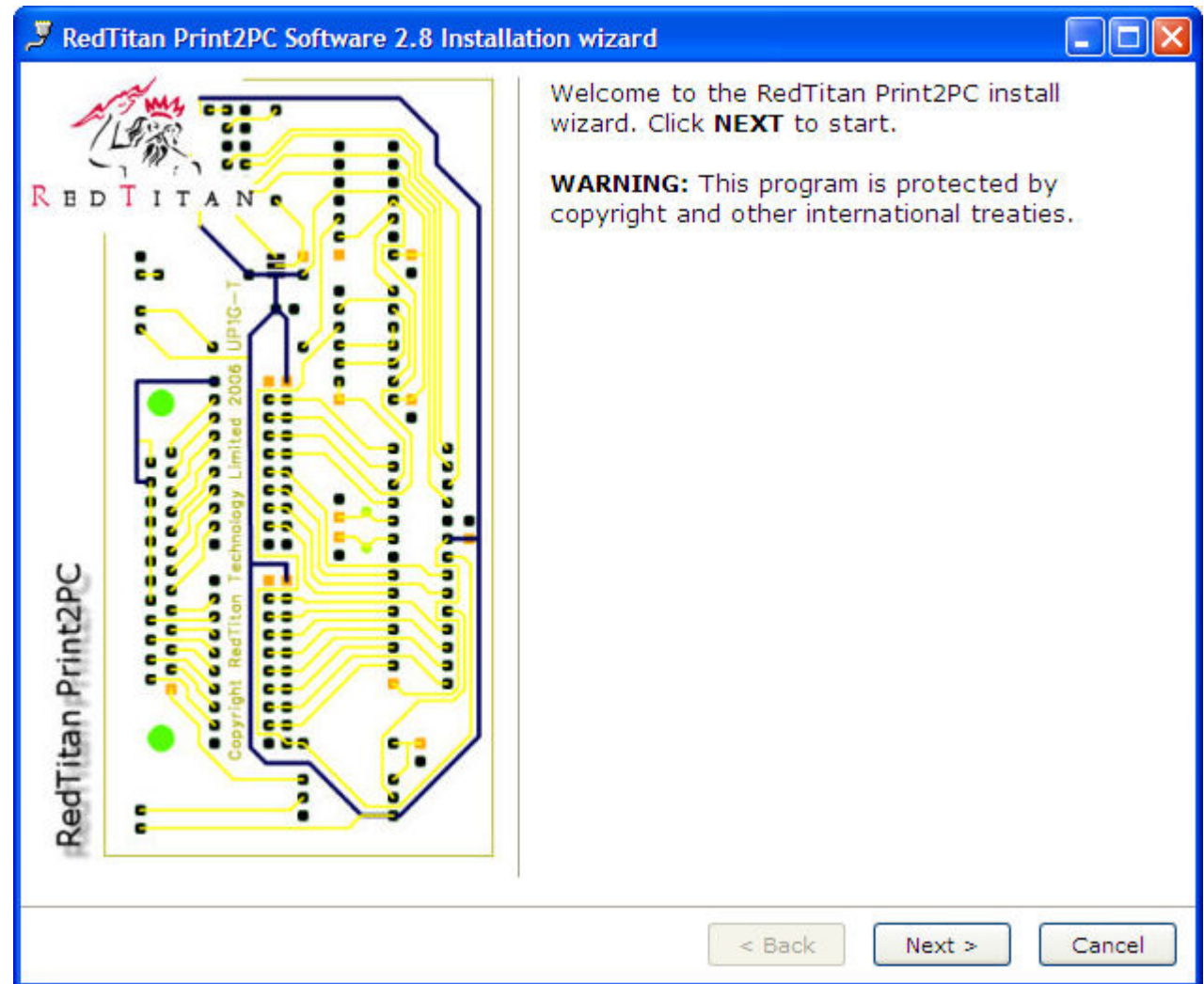
Full Name: George Michael Bichard
Position: Research & Development Director
Date: 1st January 2016

STEP 1: SOFTWARE SETUP

Software setup for Windows™ XP

To install the software for PRINT2PC, follow the instructions below

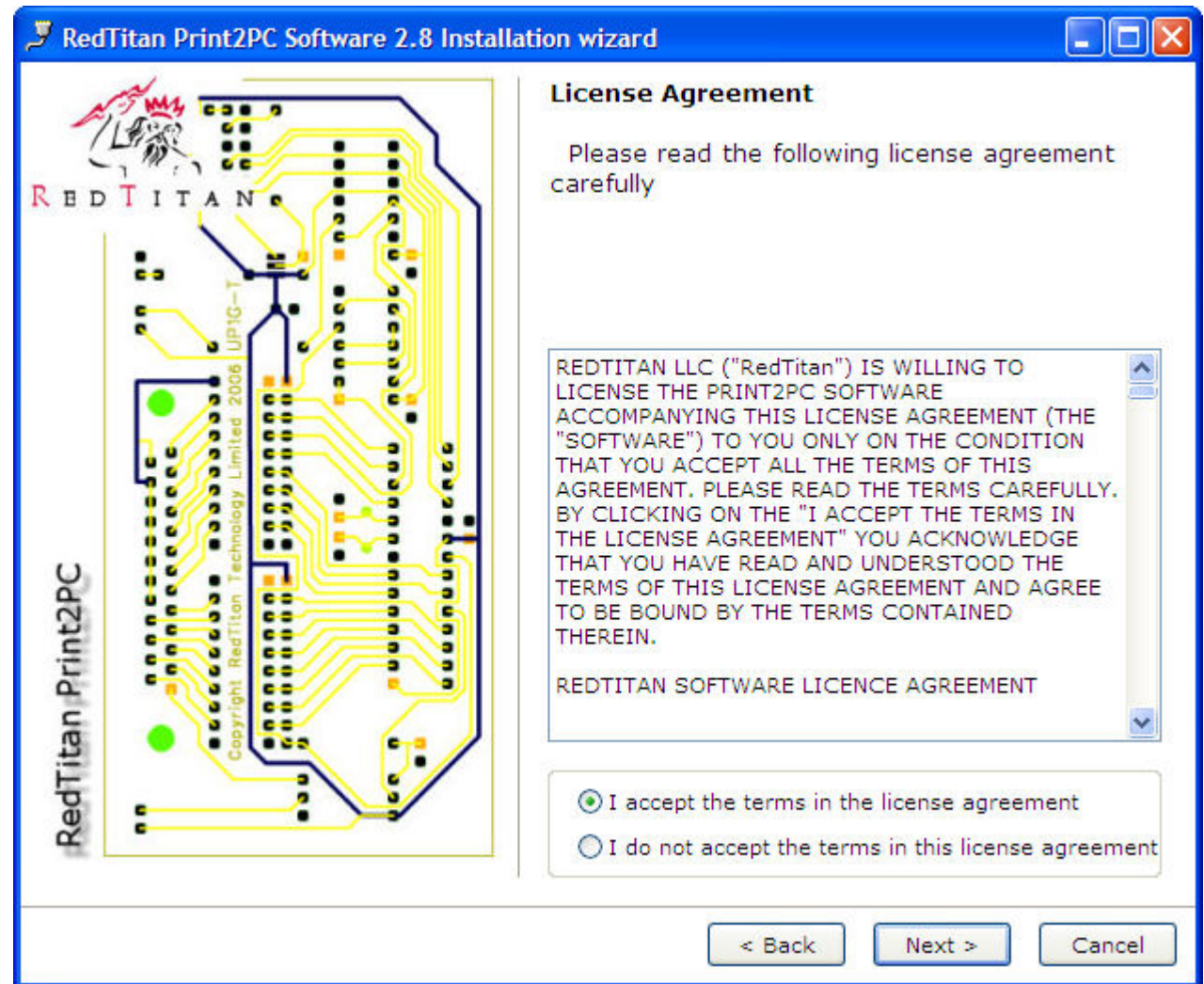
1. Insert the software installation CD-ROM into the PC's CD-ROM drive.
2. The "PRINT2PC Install Wizard" window appears. Click "Next" to begin the installation process.



STEP 1: SOFTWARE SETUP

Software setup for Windows™ XP

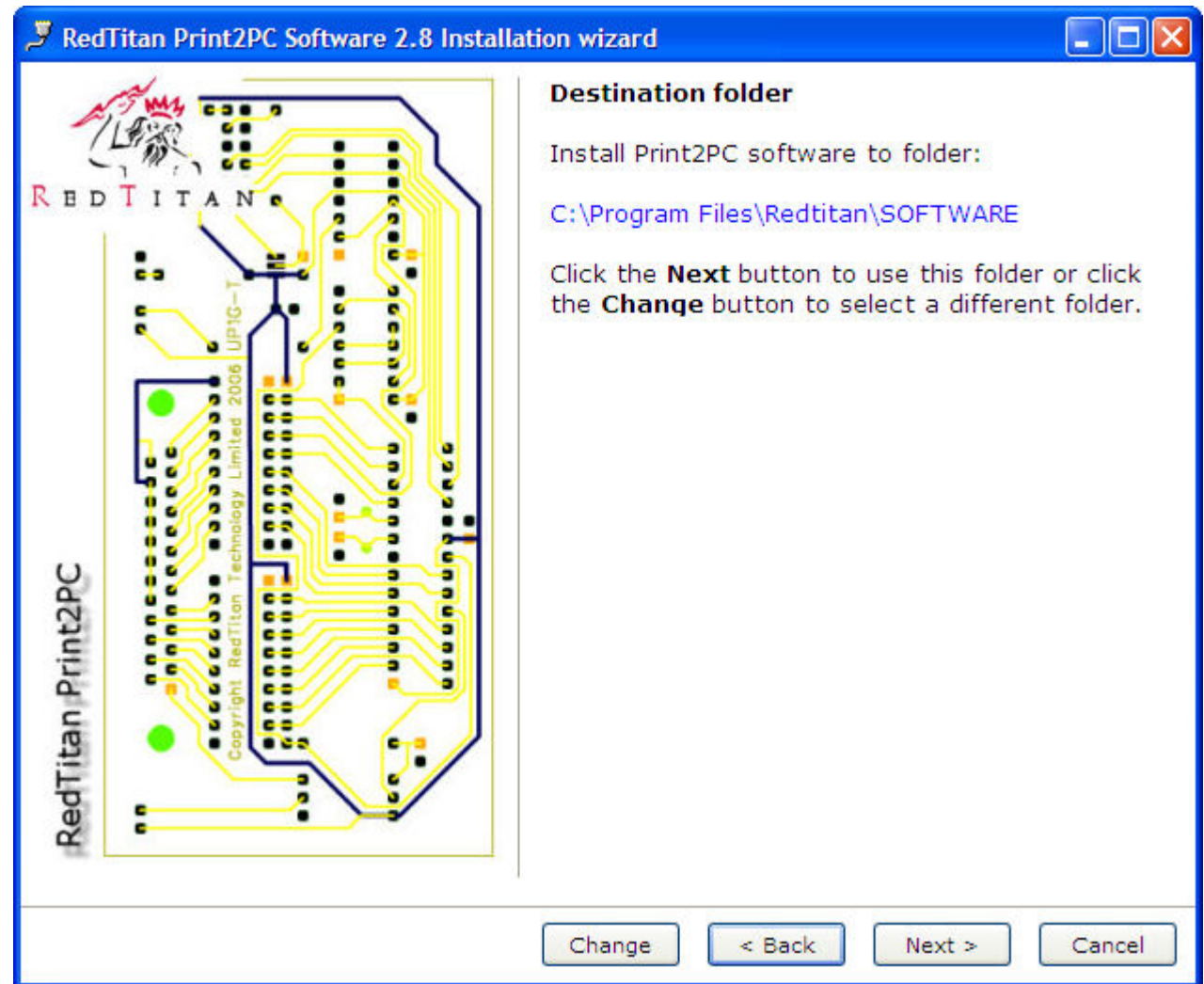
3. Choose "I accept the terms in the license agreement" to accept the license agreement. Click on "Next to continue" .



STEP 1: SOFTWARE SETUP

Software setup for Windows™ XP

4. Specify the location where the software files will be installed on your hard drive. It is recommended that you install the software in the default directory "C:\Program Files\RedTitan\Software". Click on "Next" to continue .



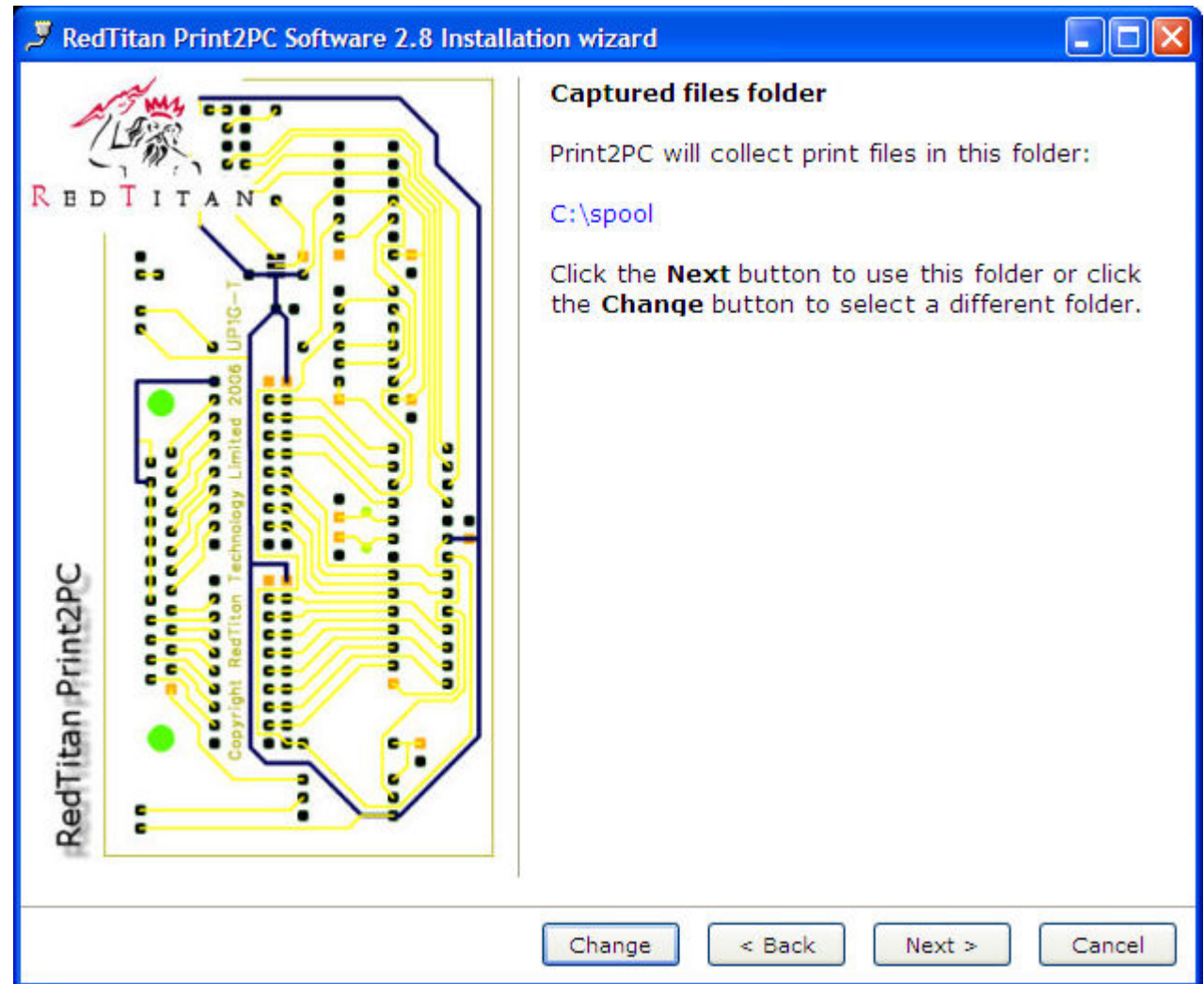
STEP 1: SOFTWARE SETUP

Software setup for Windows™ XP

5. Specify the location where Print2PC will collect print files. It is recommended that the directory chosen is a sub-directory of the root directory.

Do not use directory names containing other than alphanumeric characters.

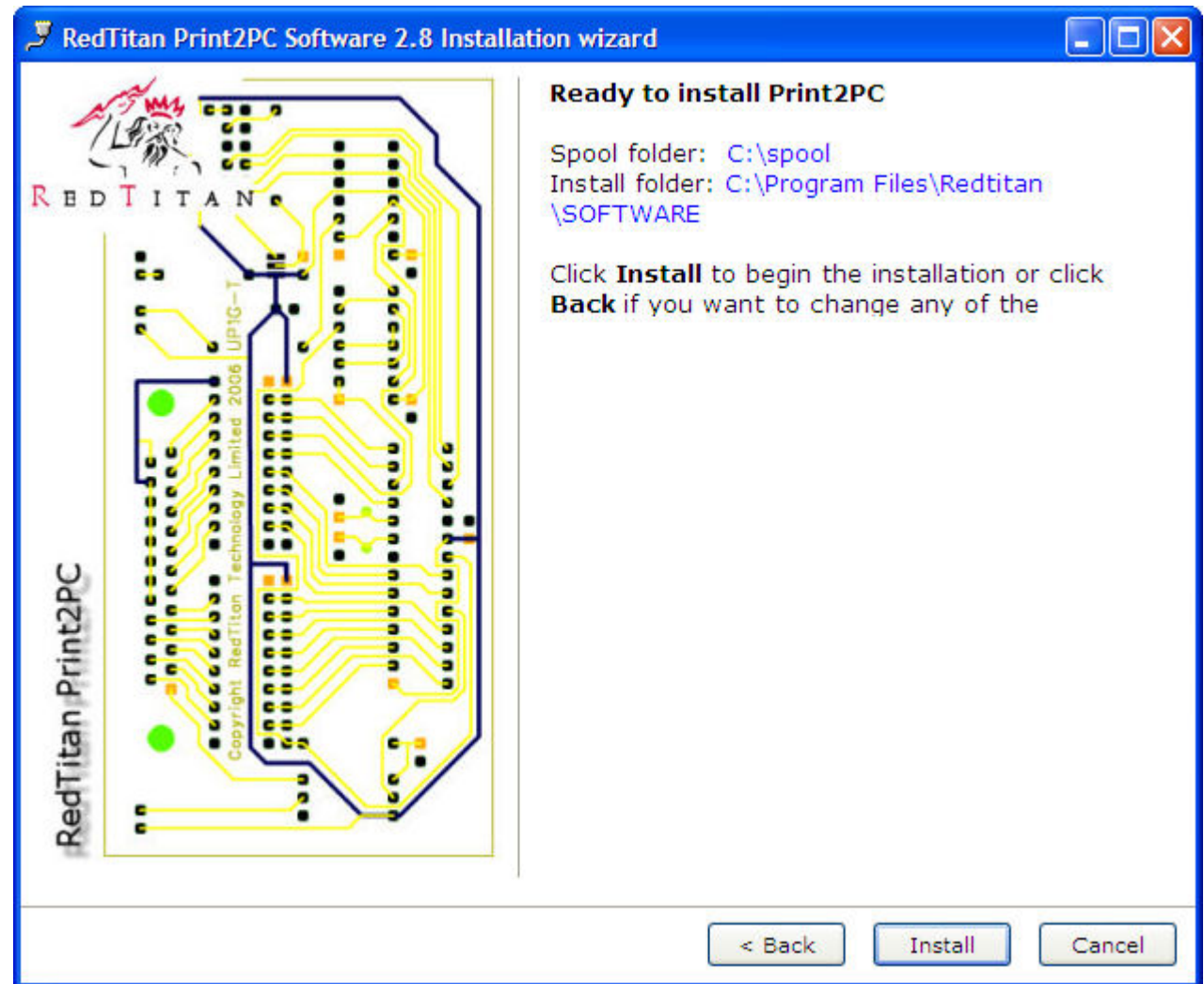
Click on "Next" to continue



STEP 1: SOFTWARE SETUP

Software setup for Windows™ XP

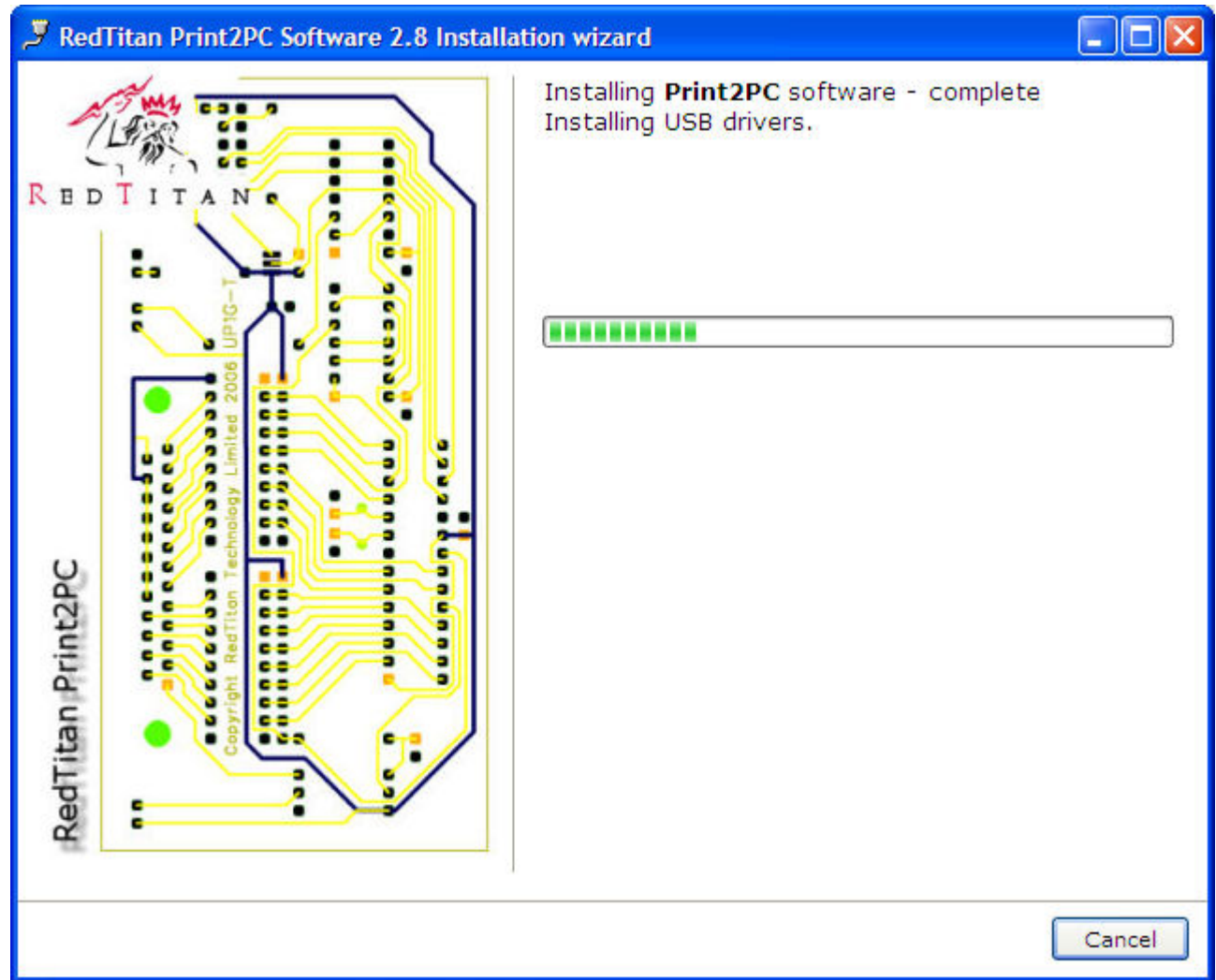
6. Confirm that the device software is ready to be installed and click on "Install"



STEP 1: SOFTWARE SETUP

Software setup for Windows™ XP

7. The install wizard will begin to install the PRINT2PC software. This may take several minutes. Click "Finish" to exit the wizard.

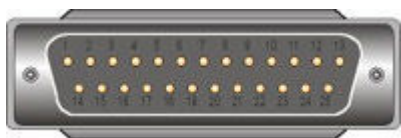


STEP 2: HARDWARE SETUP

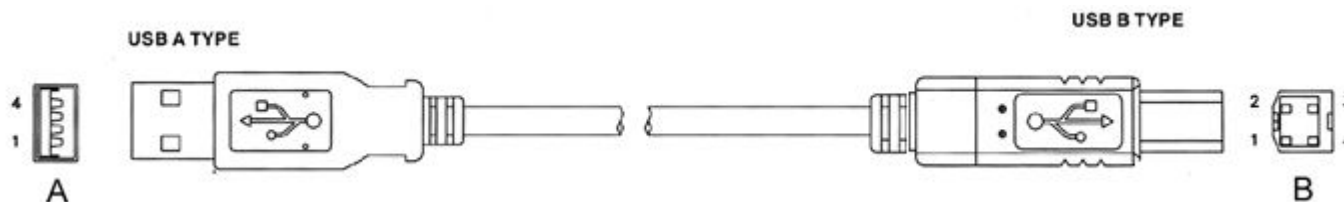
Attach cables to Print2PC UP1

Follow these instructions to attach the PRINT2PC UP1.

1. Attach the IEEE-1284 (or other suitable cable) to the source computer observing any precautions in the manufacturer documentation. PRINT2PC UP1 has CANNON 25 pin male connection for the parallel port.



2. Attach the USB cable A plug to the PC where PRINT2PC software is installed. Note: USB devices are sensitive to static electricity, which can damage its delicate electronic components. To protect your device, always touch the metal chassis of your computer before attaching the USB cables.
3. Attach the USB cable B plug to the socket on the PRINT2PC UP1. Windows will detect the new hardware and complete the installation process.



Testing and Troubleshooting

Re-boot the PC to complete the installation. Run the program Print2PC from the Windows START menu. The Print2PC device will be automatically detected.

If a warning message is displayed try re-attaching the USB cable. Windows should sound the USB notify tones - check that the PC speaker is turned on. The PORTS button can be used to display a list of USB "com" ports. If Print2PC is correctly attached you should see an entry listing the driver information "FTDIBUS\COMPORT&VID_043&PID_6001" - the "COM" port used may vary depending on other USB devices attached.

To test parallel port operation click the PRINT2PC START button. When Print2PC enters the "monitor" state you can send print data. The data activity will be displayed on the status panel.

Consult reseller documentation for information on how to configure the Print2PC installation for automatic operation and setup for specific printer replacement.